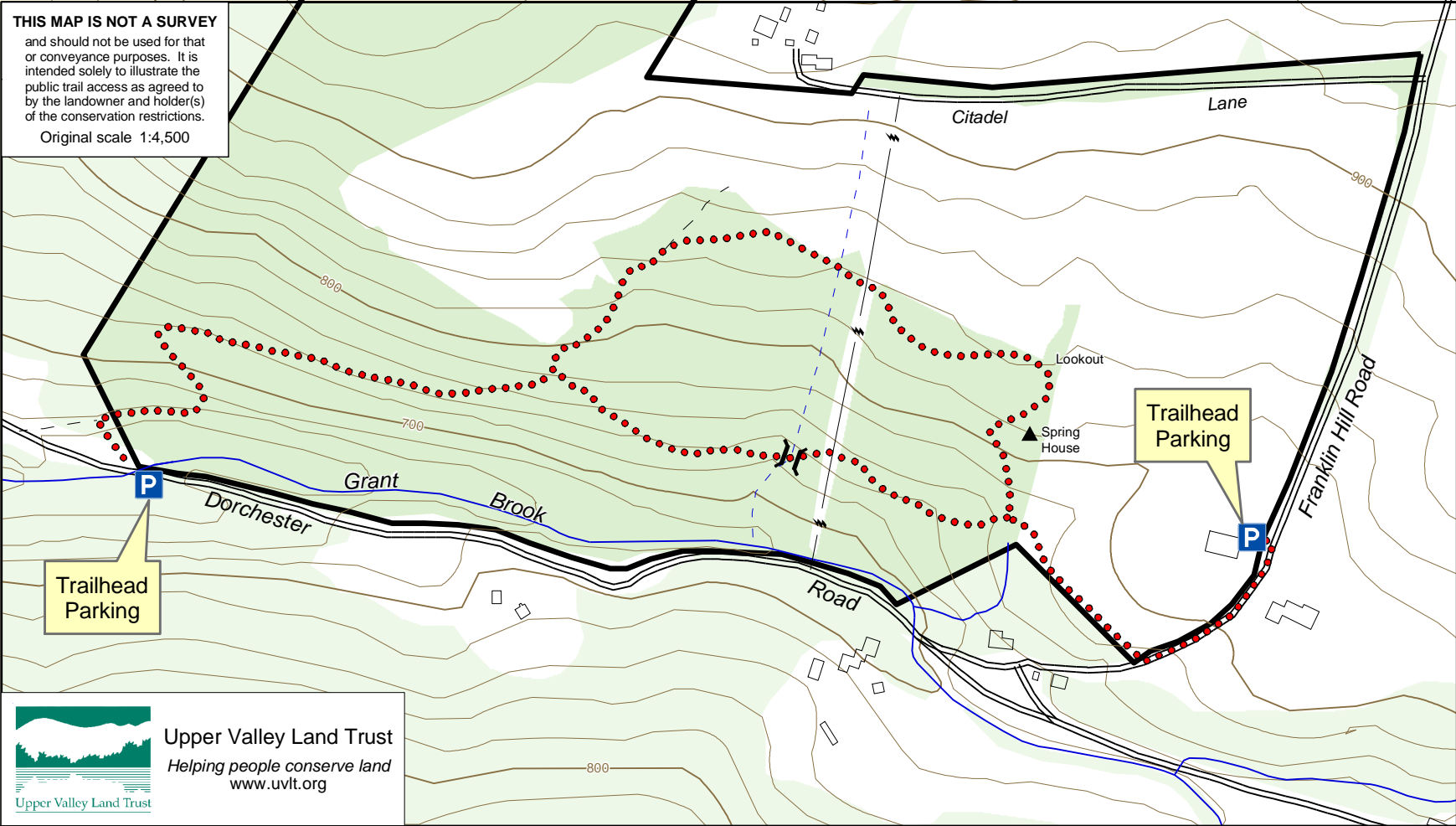


Grant Brook Trail - Johnson Loop

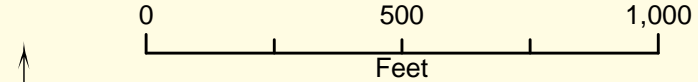
Lyme, New Hampshire

THIS MAP IS NOT A SURVEY
 and should not be used for that or conveyance purposes. It is intended solely to illustrate the public trail access as agreed to by the landowner and holder(s) of the conservation restrictions.
 Original scale 1:4,500



Legend

- Foot Trail, All-Season
- ▭ Conserved Property
- Forest
- ⌋⌋ Foot Bridge
- - - Farm Road
- ⚡ Utility Line



Trail Distances (one way)
Franklin Hill Road Trailhead to Dorchester Road Trailhead
 Via Upper Trail 0.9 miles
 Via Lower Trail 0.8 miles

Bicycles accepted during dry conditions.

Map prepared by Upper Valley Land Trust, March, 2005.
 Contour interval: 20 ft.
 Map Data Sources:
 Topographic Base Map: NHGRANIT DRG, tile 80.,
 Orthophoto Base Map: NH GRANIT tiles 80 (1992).
 Boundaries: UVLT records, Lyme tax maps.
 Forest, non-forest, water, roads: interpreted from orthophoto, with guidance from topographic base map.
 Trail: Field GPS data, acquired September, 2004.
 Map Projection: NH SPCS, NAD83, ft.