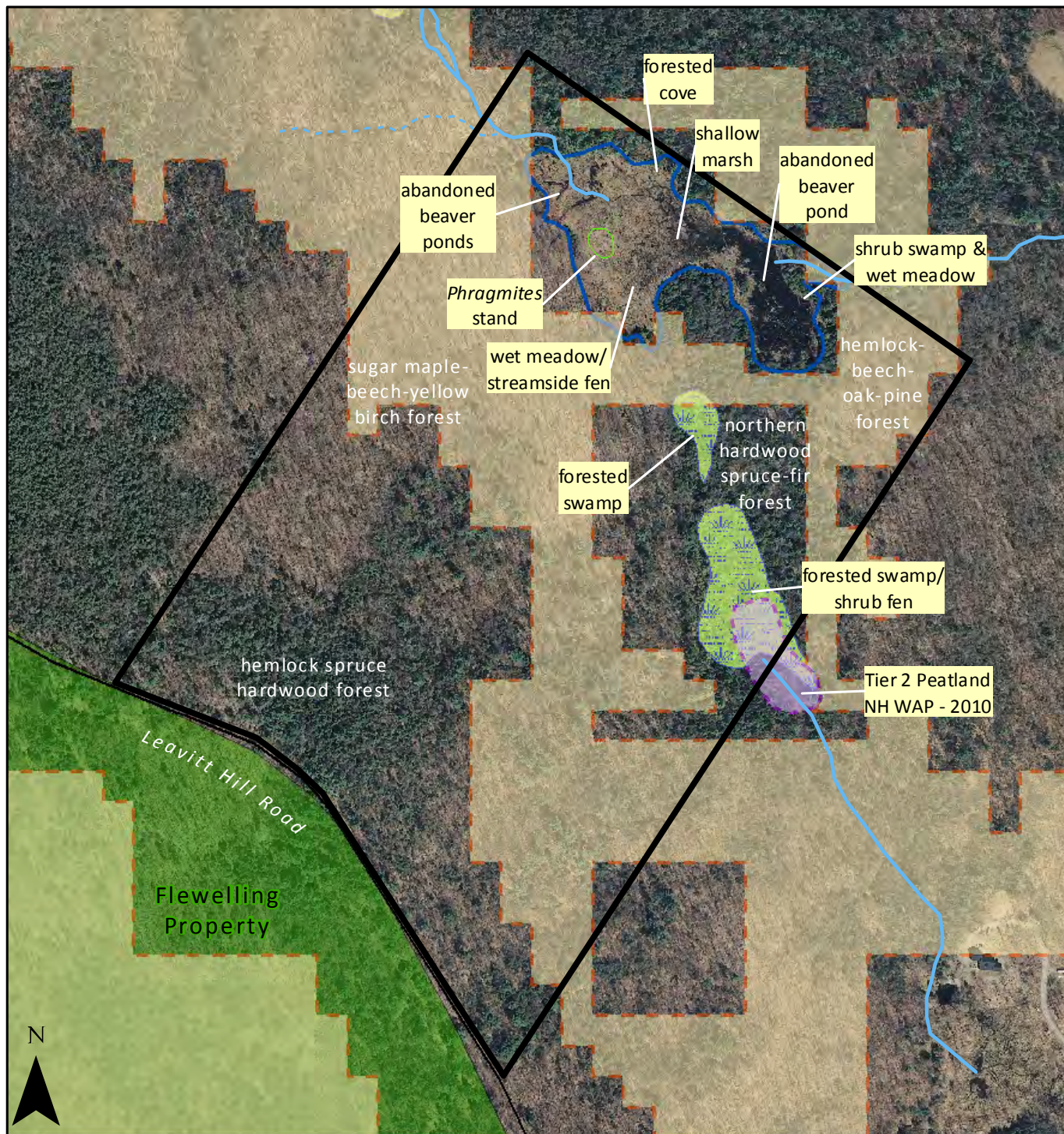


# Natural Resources Map - Leavitt Hill Wetland, Grantham, NH



0 250 500 1,000 Feet 1:5,500

- Leavitt Hill Wetland
- Other conserved or public lands
- Wildlife Action Plan Determination**
- Highest Ranked Habitat in Biological Region
- Supporting Landscape
- Forested wetlands
- Wetland
- Intermittent streams
- Perennial streams

Data sources:  
 NAIP aerial imagery (2010), NH WAP data  
 & conserved lands distributed by NH GRANIT;  
 Wetland/upland classifications distributed by  
 J. Kennedy, 2011;  
 Map projection: NH SPCS, NAD 83, ft;  
 Map created: November 2011 (ALB)

